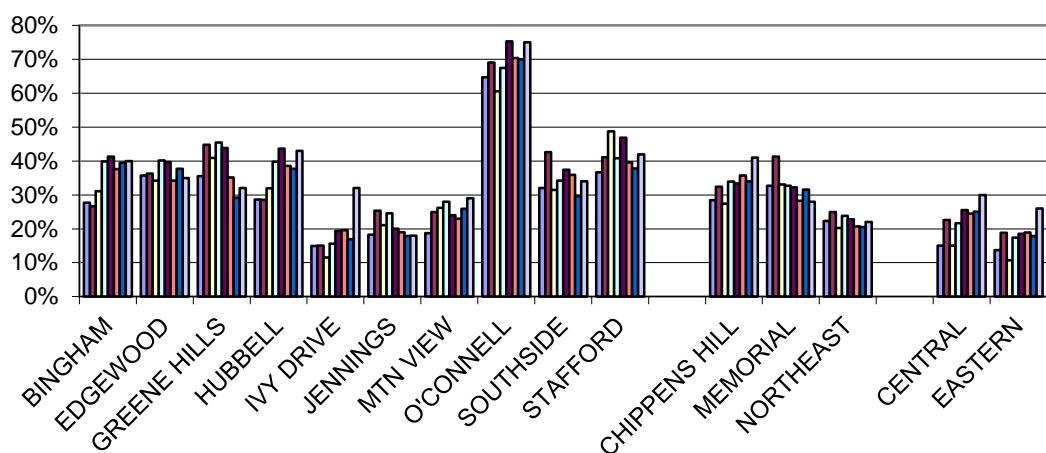


OCTOBER 1ST. REPORT OF:
ELIGIBLE FREE REDUCED STUDENTS

OCTOBER SCHOOL YEAR 2004/2005						
SCHOOL	ENROLLMENT	AVG DAILY ATTN	FREE	REDUCED	2004-2005	
SOUTHSIDE	481	469	141	39	0.37	
MEMORIAL	521	506	126	42	0.32	
O'CONNELL	299	291	181	44	0.75	
GREENE HILLS	292	286	97	31	0.44	
BINGHAM	218	213	75	15	0.41	
JENNINGS	319	313	50	14	0.20	
CHIPPENS HILL	960	929	240	80	0.33	
BCHS	1422	1364	285	78	0.26	
HUBBELL	378	368	112	53	0.44	
MTN VIEW	271	266	48	17	0.24	
IVY DRIVE	314	307	45	16	0.19	
NORTHEAST	609	598	100	39	0.23	
EDGEWOOD	340	333	116	19	0.40	
STAFFORD	333	318	122	34	0.47	
EASTERN	1279	1220	186	51	0.19	
						4791
TOTALS	8036	7781	1924	572	0.31	3245
Kindergarten count for Oct 1 is 614		Free - 142	Reduced - 21			
Pre-K total is 229		Free - 20	Reduced - 2			
TOTAL FREE & REDUCED ELIGIBLE		=	2496			
ELEMENTARY		#VALUE!	#VALUE!			
FREE & REDUCED % AGAINST ENROLLMENT			=	31%		

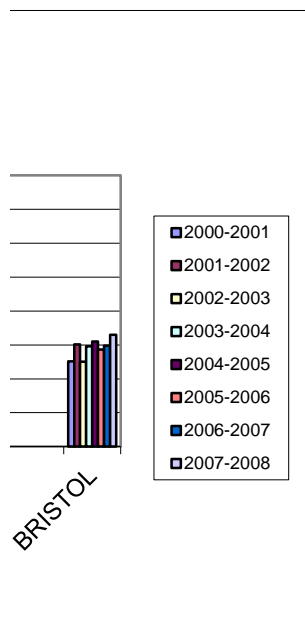
SCHOOL	2000-2001	2001-2002	2002-2003	2003-2004	2004-2005	2005-2006	2006-2007	2007-2008
BINGHAM	28%	27%	31%	40%	41%	37.6%	39.5%	40.0%
EDGEWOOD	36%	36%	34%	40%	40%	34.2%	37.7%	35.0%
GREENE HILLS	36%	45%	41%	45%	44%	35.2%	29.2%	32.0%
HUBBELL	29%	29%	32%	40%	44%	38.6%	37.7%	43.0%
IVY DRIVE	15%	15%	12%	16%	19%	19.6%	16.9%	32.0%
JENNINGS	18%	25%	21%	25%	20%	19.0%	17.9%	18.0%
MTN VIEW	19%	25%	26%	28%	24%	22.9%	25.9%	29.0%
O'CONNELL	65%	69%	61%	67%	75%	70.4%	70.0%	75.0%
SOUTHSIDE	32%	43%	32%	34%	37%	35.9%	29.7%	34.0%
STAFFORD	37%	41%	49%	41%	47%	39.6%	37.8%	42.0%
CHIPPENS HILL	28%	32%	27%	34%	33%	35.8%	34.0%	41.0%
MEMORIAL	33%	41%	33%	33%	32%	28.2%	31.6%	28.0%
NORTHEAST	22%	25%	20%	24%	23%	20.7%	20.5%	22.0%
CENTRAL	15%	23%	15%	22%	26%	24.5%	25.1%	30.0%
EASTERN	14%	19%	11%	17%	19%	18.9%	17.9%	26.0%
BRISTOL	25.1%	30.1%	25.0%	29.6%	31.0%	28.7%	29.8%	33.0%

Percentage of Students Qualified for Free or Reduced Lunch 2000-2007



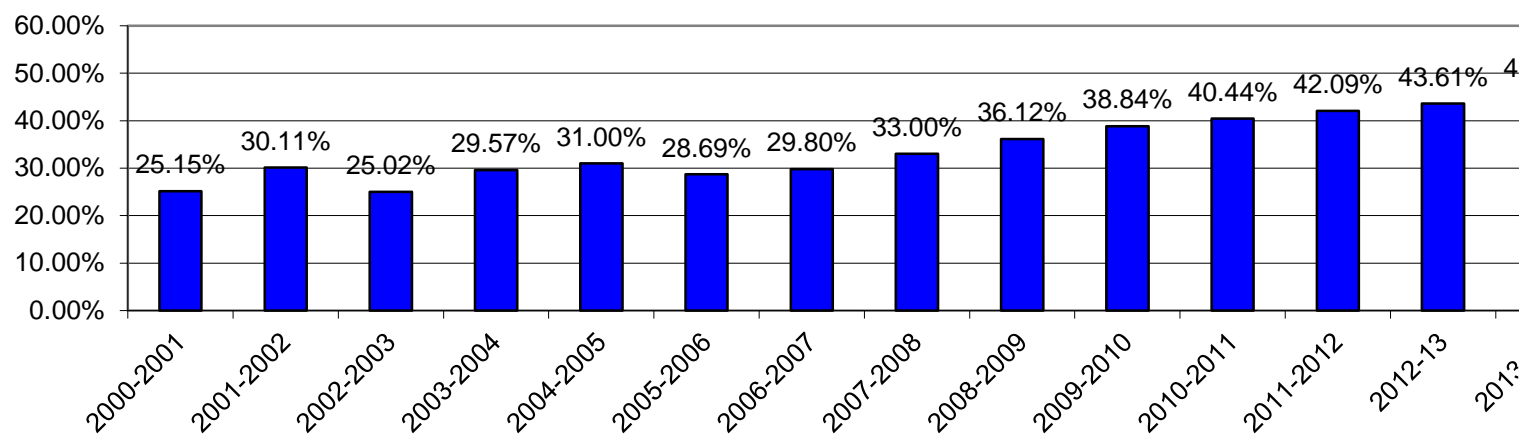
2008-2009 2009-2010 2010-2011 2011-2012 2012-13 2013-14 2014-15 2015-16

36.12% 38.84% 40.44% 42.09% 43.61% 45.41% 47.05% 47.34

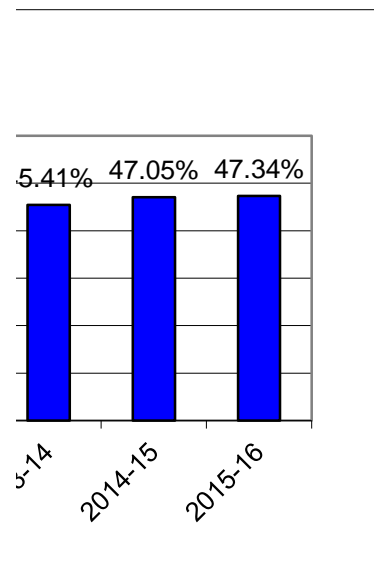


	2000-2001	2001-2002	2002-2003	2003-2004	2004-2005	2005-2006	2006-2007	2007-2008	2008-2009	2009-2010	2010-2011	2011-2012
BRISTOL	25.15%	30.11%	25.02%	29.57%	31.00%	28.69%	29.80%	33.00%	36.12%	38.84%	40.44%	42.09%

Free/Reduced Lunch Percentages



2012-13	2013-14	2014-15	2015-16
43.61%	45.41%	47.05%	47.34%



Appendix E - Free/Reduced Lunch Qualified Students

